

Odyssey Client Install Instructions for PC

*****Note to Faculty: You can use these directions too!
Just substitute Faculty wherever you see Student!**

Download the appropriate Odyssey package from the Wayland High website.
http://www.wayland.k12.ma.us/high_school/technology/OdysseyClient.htm

Double click on the Zip file

Expand, or unzip the file.

This window will pop up.

Click next



Select **English**

Click next

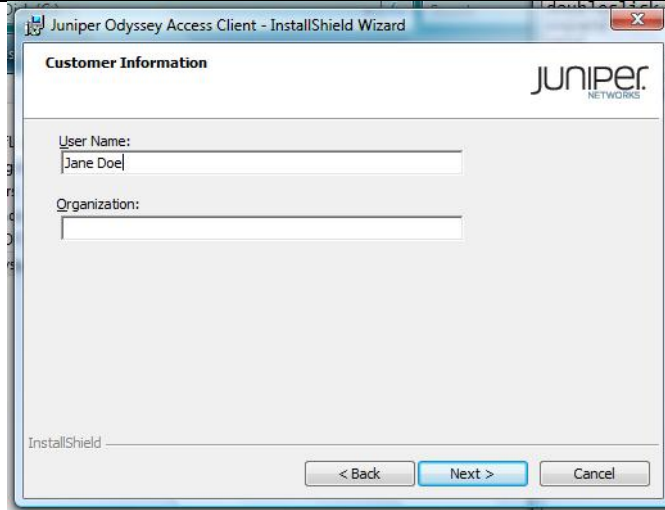


Odyssey InstallShield Client Wizard will come up.

Where it says **username** put **your name (Ex: Jane Doe)**

You can leave the organization field blank

Click next



Click Install

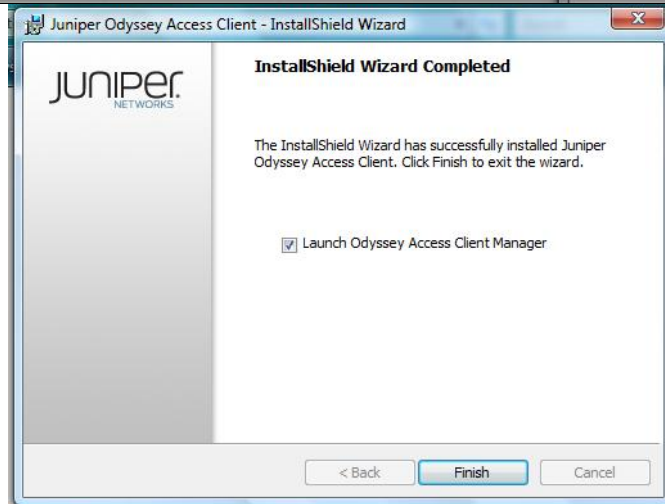
The Install may take a few minutes.



When the program it completes installation,

Make sure that the **Launch Odyssey Access Client** box is checked off.

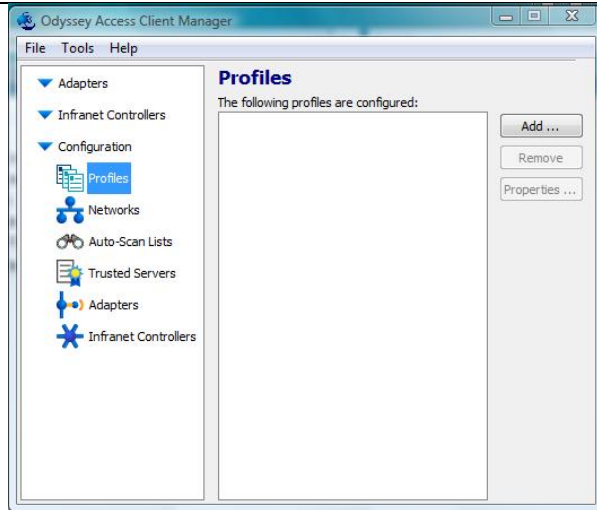
Click finish.



The **Odyssey Access Client Manager** window will come up.

It should say **Profiles** on the top of the window.

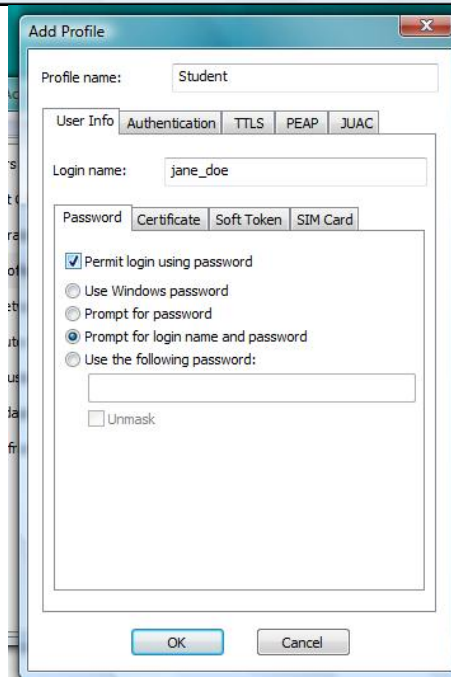
Click **add**.



In profile name field type in **Student**

Where it says login name type your name in the following format : jane_doe. (all lower case)

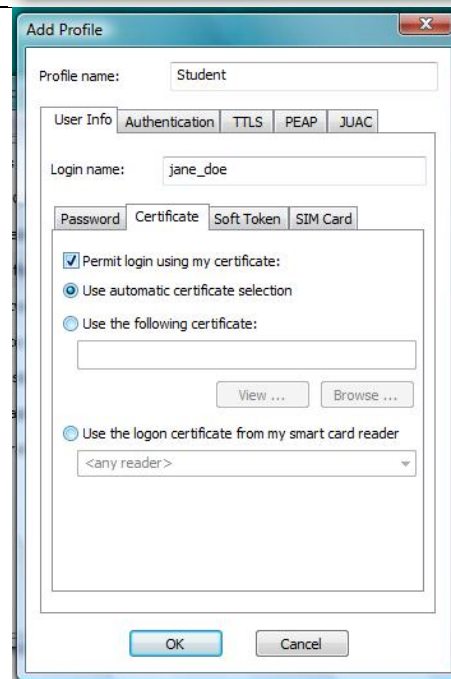
Check off the box that says **prompt for login name and password**.



Click on **Certificate** tab

Check off the box next to **Permit Login using my certificate:**

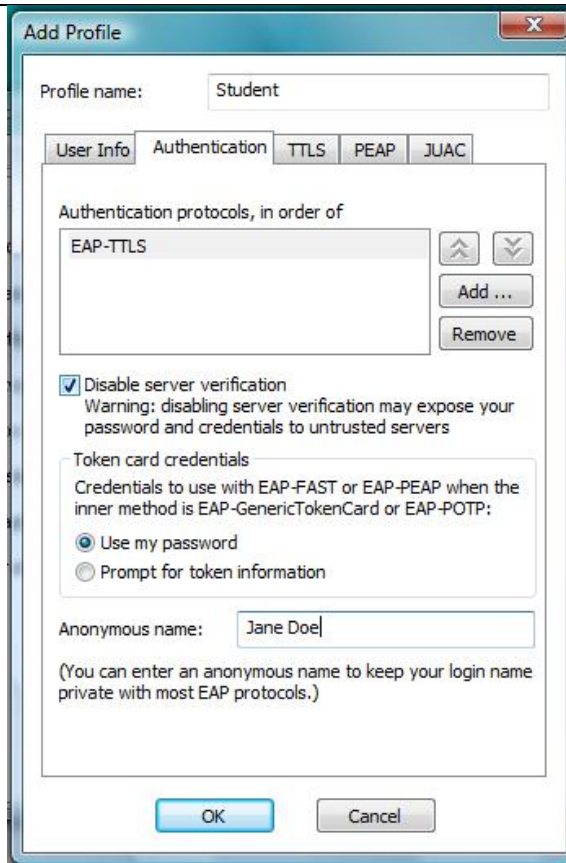
Click on **Authentication** tab



Check off the box next to **Disable Server verification**
Warning:

In the **anonymous name** box type your name in the following format: Jane Doe

Click on the **TTLS** tab

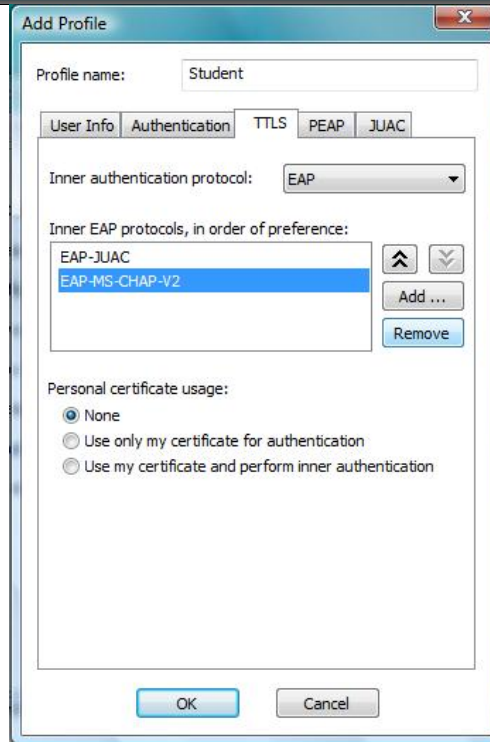


Highlight **EAP-MS-CHAP-V2** by clicking on it, and then

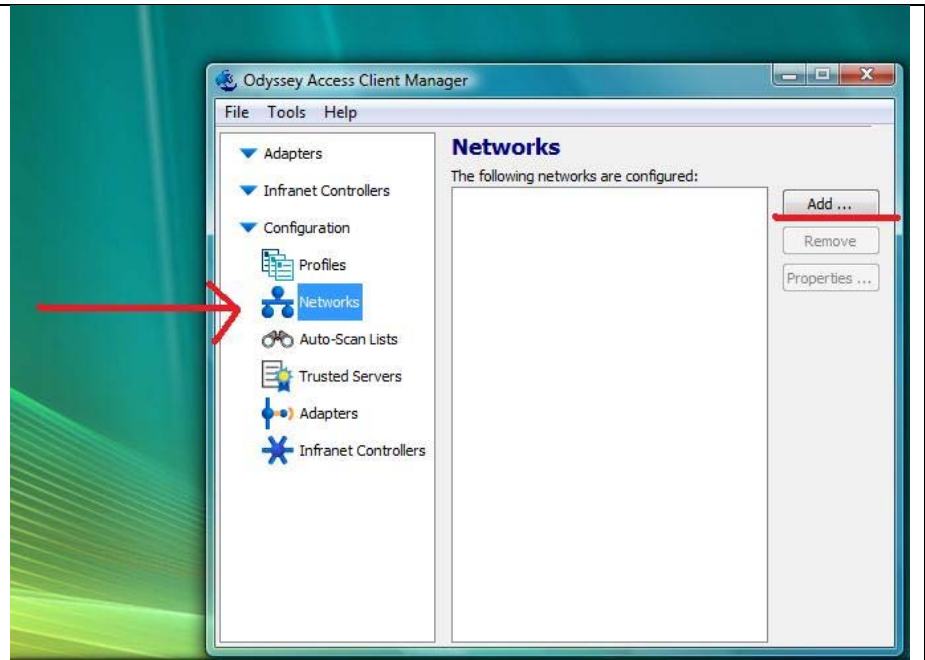
Click **remove**.

Click on **ok**

Click on **networks**



Click **Add**

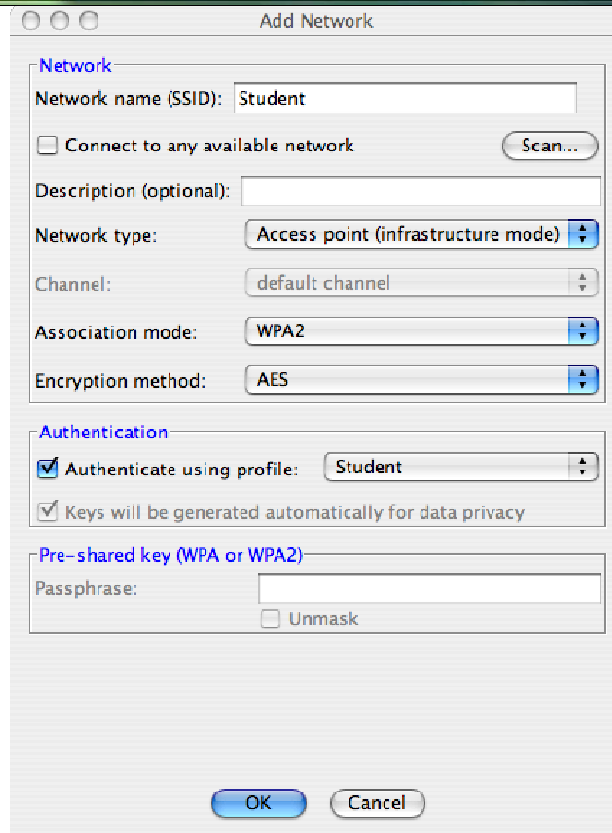


In the **ssid** field type
Student

Chose **Association mode:**
WPA2

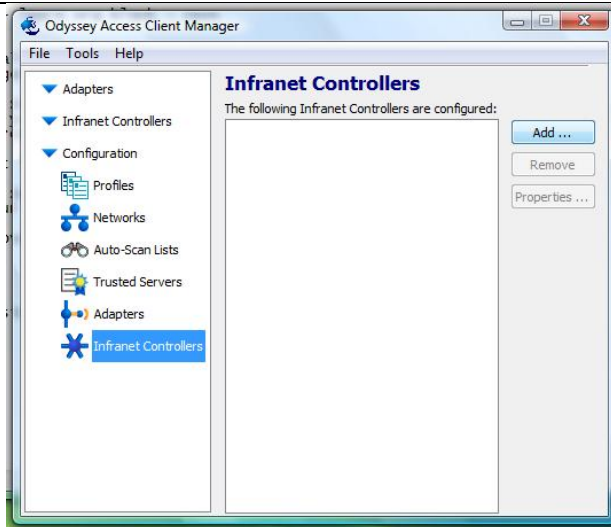
Make sure that **authenticate
using profile** is checked off
and says **Student**

Click **ok**



Click on **Infranet controller**

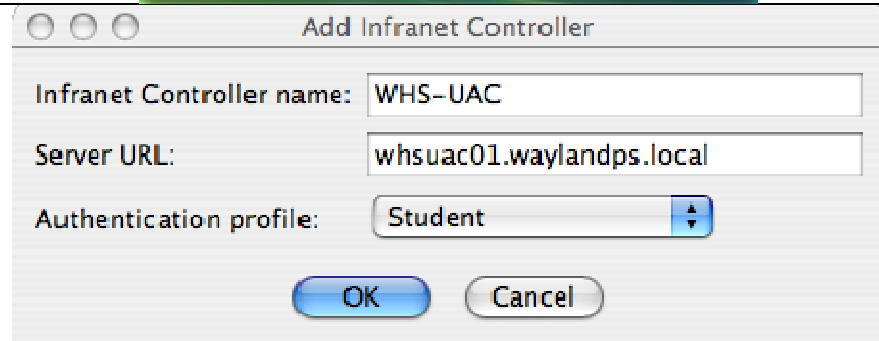
Click **Add**



Infranet Controller Name:
WHS-UAC

Server URL:
whsuac01.waylandps.local

Authentication profile :
Student



Click on **Adapters**

Click on the **Wireless Tab**

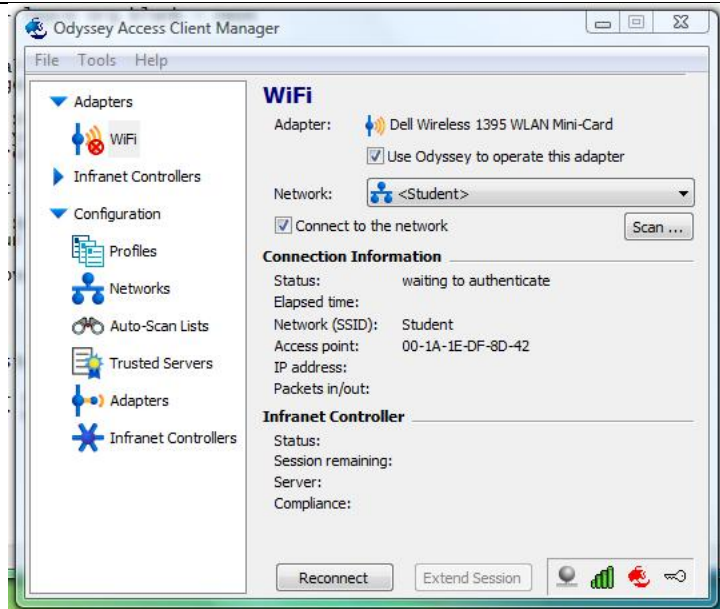
Make sure **Wireless adapters only** is checked off.

Select whatever wireless card you have.

Click **ok**



The **Wifi** window will come up



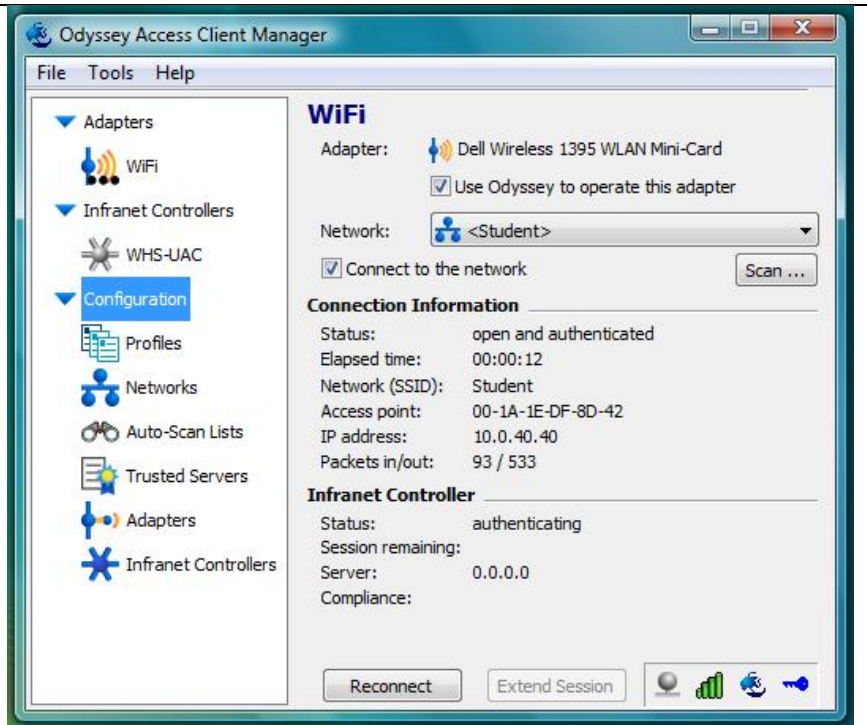
THIS IS AS FAR AS YOU CAN GET FROM HOME!

WHEN YOU GET TO SCHOOL LAUNCH THE ODYSSEY CLIENT AND THE WIFI WINDOW WILL COME UP.

Configuration

MAKE SURE THAT IT SAYS **STUDENT** NEXT TO WHERE IT SAYS NETWORK.

CHECK OFF THE BOX THAT SAYS **CONNECT TO NETWORK**



Put in your **password**

Click **ok**.

You should now be all set to **surf away**



To disconnect quit the **Odyssey access client manager**